

# SERENITY

 Experiences

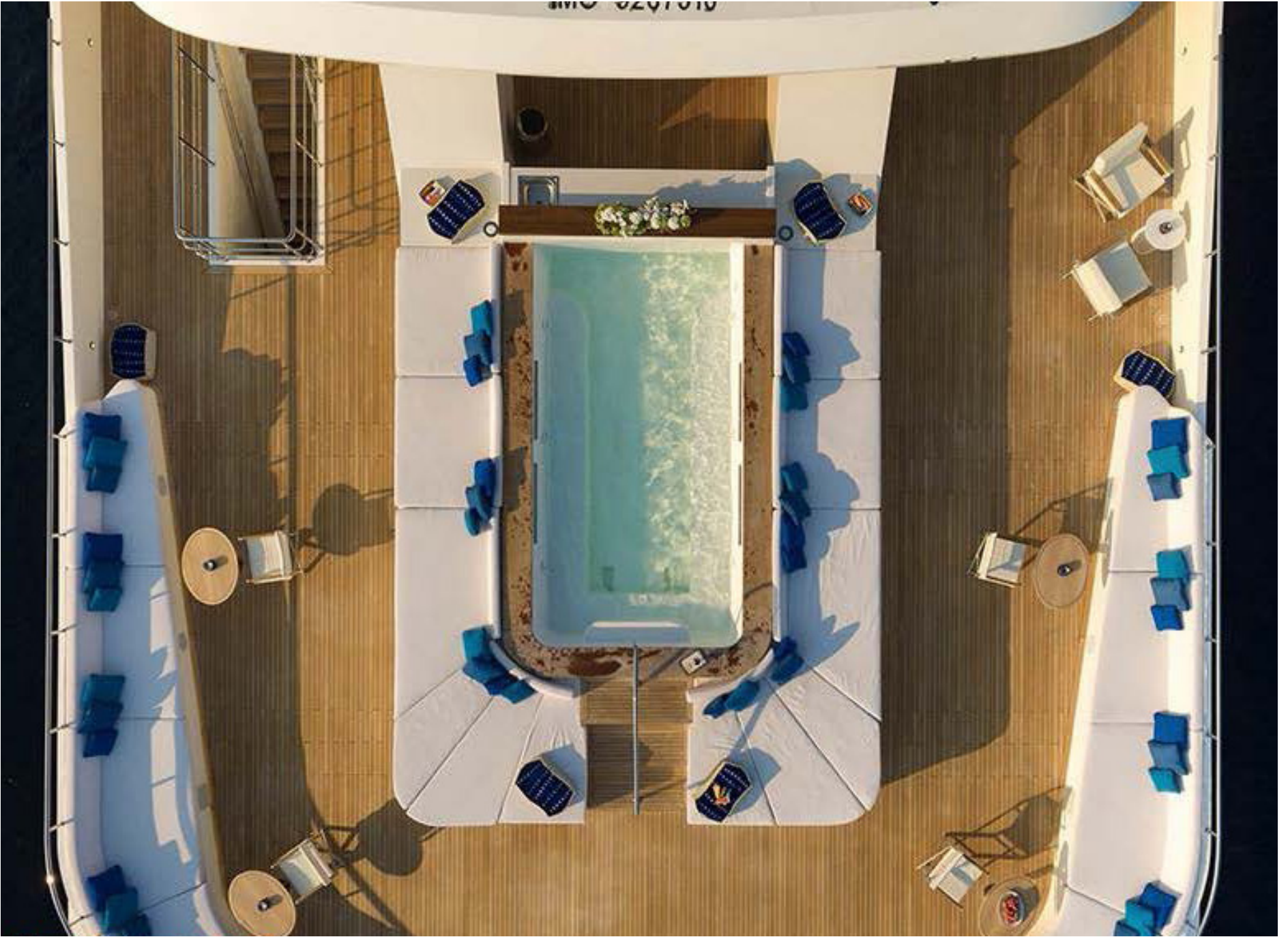
 F S W  
EVENTS













# THE SUN DECK









# UPPER DECK AFT



# BRIDGE DECK DINING





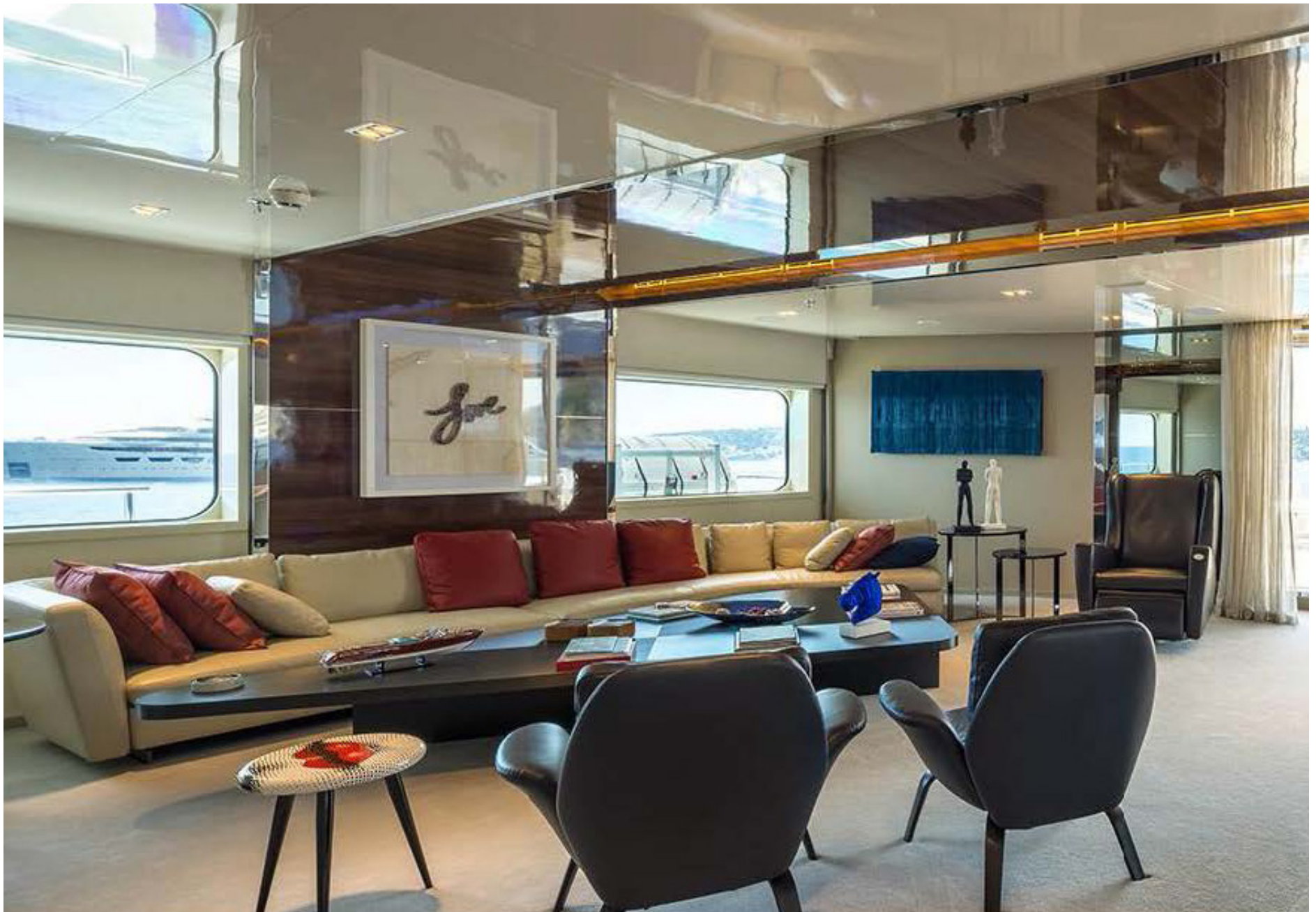
# MAIN DECK AFT







# SKY LOUNGE







# UPPER DECK LOUNGE







# MAIN DECK DINING



# MASTER CABIN



# MASTER BATHROOM





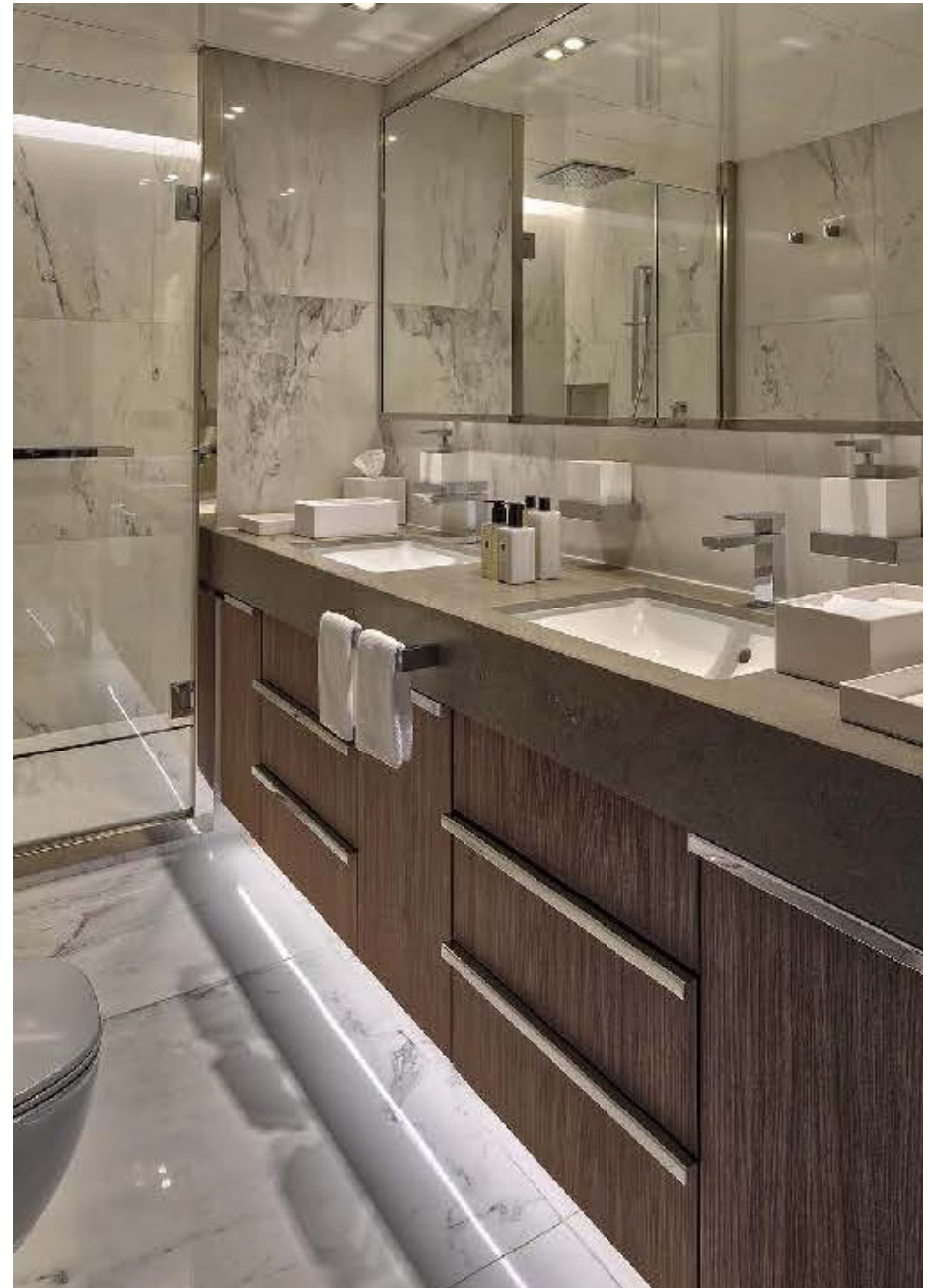




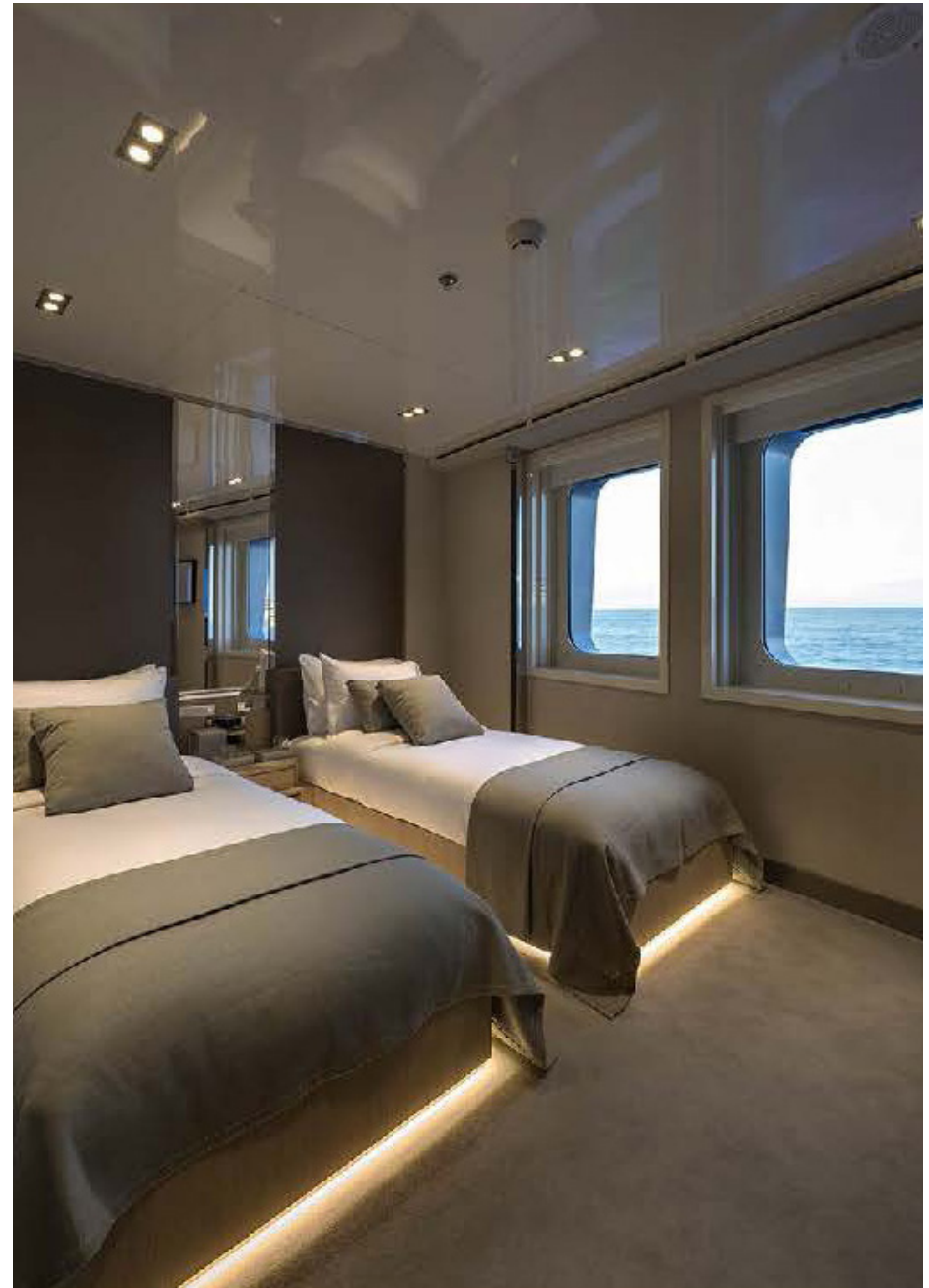
# GUEST CABIN



# GUEST CABIN



# GUEST CABIN





## HAIR SALON



## SAUNA





# CINEMA



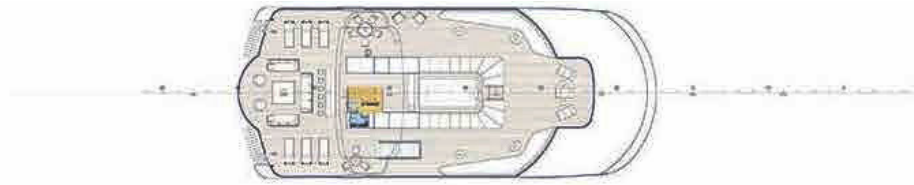








# DECK PLANS



SUN DECK



BRIDGE DECK



UPPER DECK



MAIN DECK



LOWER DECK

# YACHT SPECIFICATIONS

---

## **LENGTH**

72m (236ft)

## **BUILD**

Austal, 2004. Refit, 2017.

## **SPEED-CRUISEING / MAXIMUM & FUEL CONSUMPTION**

About 13 to 16 knots / 350 litres per hour at cruising speed

## **CREW**

30

## **GUESTS & ACCOMMODATION**

Up to 28 guests and 2 staff in 15 cabins:

A Master cabin, 11 double, 2 twin and 1 staff cabin

## **COMMUNICATIONS & ENTERTAINMENT**

Modern entertainment systems

Satellite communications

All details are given in good faith, but can not be guaranteed.